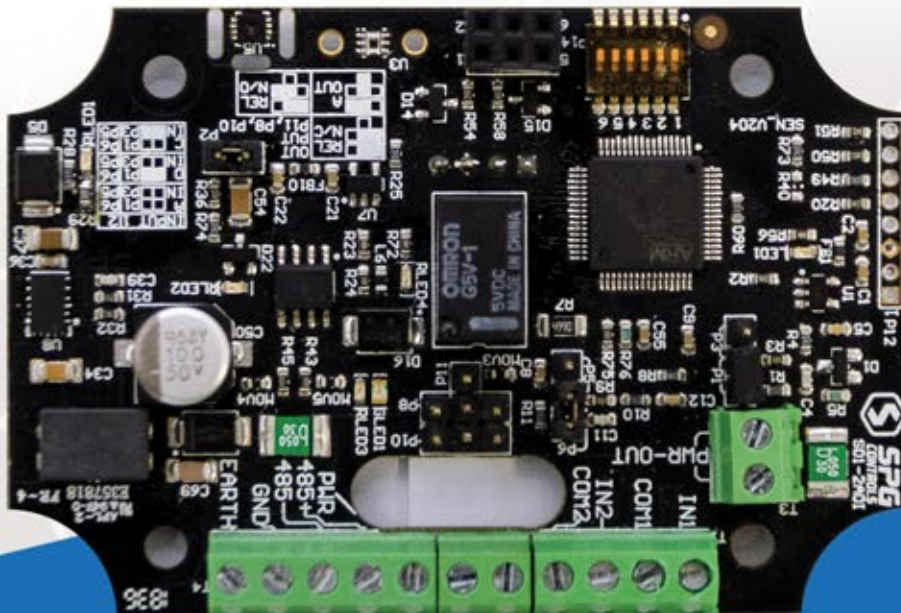


SPG Sensor Remote Device



The SPG Sensor interface card provides an easy expansion for an S1000 Smart Controller to provide analogue sensing information to be collected and then used to make local decisions as well as passing to ARCO Platform for logging. The Sensor device runs on OSDP communication, and up to 16 devices can connect to an S1000 Smart Controller.

Each sensor board supports onboard Temperature and Humidity, Light detection and an Accelerometer for movement detection. Each board has digital/analog inputs and outputs to support integration and monitoring of third-party devices.

Also available are optional expansions for Air Pressure, Smoke or Hazardous Gas as well as IR Remote Control capabilities.



Temperature and Humidity Sensors



Light, Movement and Vibration detection



2 Analog or Digital Inputs software programmable



1 Relay output or analog output software programmable



Supports OSDP (up to 1000m)



Auxiliary power supply output



Optional: Real-time Air Pressure Smoke and Hazardous Gas detection



Optional: InfraRed controller

Sensor Technical Specifications

Sensor Remote Device

Temperature Sensor range	-40 to 125 degrees C
Humidity Sensor range	0-100%
Light Sensor range	0.1Lux to 83K Lux
Motion Sensor range	3 Axis Gyroscope: 250, ± 500 , ± 1000 , and ± 2000 degrees/sec 3 Axis Accelerometer: 2g, $\pm 4g$, $\pm 8g$, and $\pm 16g$
Inputs	0-10V, 0-20mA or 1K-50K monitored EOL
Outputs	1 Relay N/O or N/C selectable 1A@24V or 0-10V Analog output
Operating Temperature	-40 to 85 degrees C
Operating Humidity	5% to 95%
Power consumption	20mA idle, Max 60mA with Relay activated and inputs terminated
Dimensions	80mm x 56mm
Weight	50g

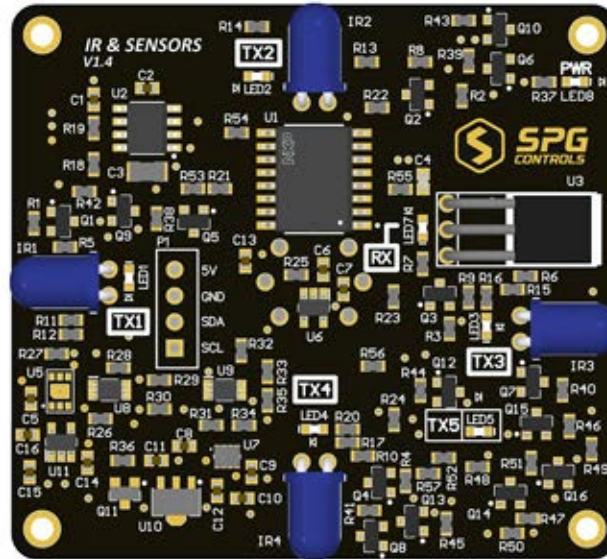


Sealed Outdoor Plastic Enclosure



Indoor Plastic Enclosure

Optional: Sensor Expansion Board



Expansion Technical Specifications

Hazardous Gases Detection

Gas Type Detected	LPG, Butane, Propane, Methane, Alcohol, Hydrogen and Smoke
Detecting Concentration Scope	LPG and Propane = 200ppm to 5000ppm Butane = 300ppm to 5000ppm Methane = 5000ppm to 20000ppm

Pressure Sensor

Range	Detects pressure from 300 to 1100 hPa
Relative Accuracy	±0.12 hPa, equiv. to ±1 m (950 to 1050hPa @25°C)
Absolute Accuracy	typ. ±1 hPa (950 to 1050 hPa, 0 to +40°C)

Indoor Air Quality Sensor

Detects Contaminating Gases	Ethanol and Hydrogen gas
Detecting Concentration Scope	Ethanol = 0ppm to 1000 ppm Hydrogen = 0ppm to 1000 ppm

Infrared Remote Control

Infrared Emitters	5x directions
Infrared Receiver	1x facing UP

Ordering Info

Sensor Board Selecting Guide

Part Number	Product Code	PBC Only	Outdoors	Indoors	Temperature	Humidity	Light	Movement	Pressure	Hazardous Gas	Air Quality	Infrared
200110	SD1-2ADI-PCB	•			•	•	•	•				
200111	SD1-2ADI-PENC		•		•	•	•	•				
200112	SD1-2ADI-TENC			•	•	•	•	•				
200113	SD1-2ADI-EXPI			•	•	•	•	•				
200114	SD1-2ADI-TENG			•	•	•	•	•	•	•	•	•
200115	SD1-2ADI-TENI			•	•	•	•	•	•	•	•	
200116	SD1-2ADI-TENM			•	•	•	•	•				•