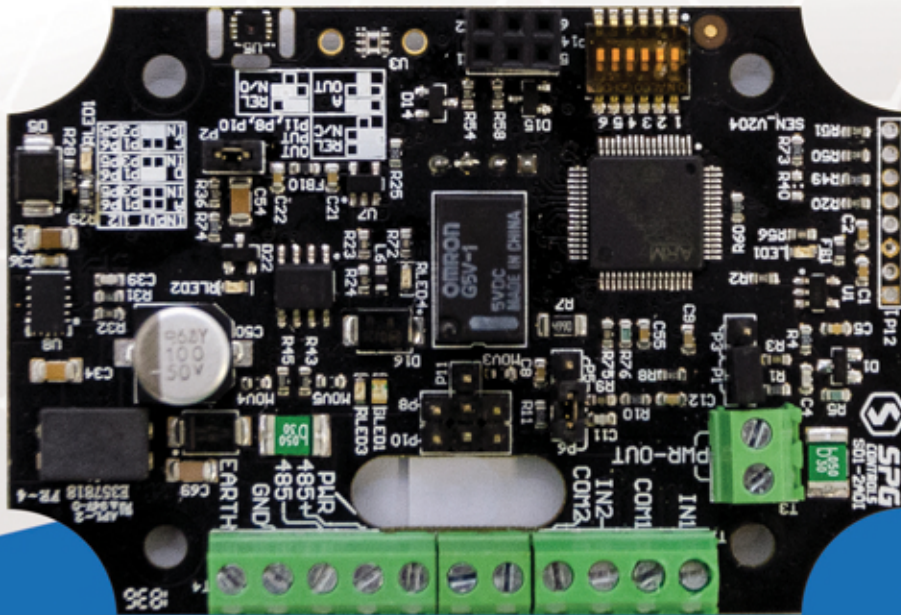


SPG Sensor

Remote Expansion Device



The SPG Sensor interface card provides an easy expansion for an S1000 Smart Controller to provide analogue sensing information to be collected by the S1000 Smart Controller and then used to make local decisions as well as to pass to ARCO Platform for logging. The Sensor device runs on an OSDP communications and up to 16 devices can be connected to an S1000 Smart Controller. Each sensor board supports onboard temperature and humidity, light detection and an accelerometer for movement detection. There are also 2 additional digital/analog inputs, with the analog inputs supporting both voltage and current monitoring of third-party sensor devices. In addition, there is also 1 analog/digital output.



Temperature and Humidity Sensors



Light and Movement Detector



2 Analog or Digital Inputs software programmable



1 Relay output or analog output software programmable



Supports OSDP (up to 1000m)



Auxiliary power supply output

Technical Specifications

Temperature Sensor range	-40 to 125 degrees C
Humidity Sensor range	0-100%
Light Sensor range	0.1Lux to 83K Lux
Motion Sensor range	3 Axis Gyroscope: 250, ±500, ±1000, and ±2000 degrees/sec 3 Axis Accelerometer: 2g, ±4g, ±8g, and ±16g
Inputs	0-10V, 0-20mA or 1K-50K monitored EOL
Outputs	1 Relay N/O or N/C selectable 1A@24V or 0-10V Analog output
Operating Temperature	-40 to 85 degrees
Operating Humidity	5% to 95%
Power consumption	20mA idle, Max 60mA with Relay activated and inputs terminated
Dimensions	80mm x 56mm
Weight	50g



Ordering Information

Part Number	Product Code	Description
200110	SD1-2ADI-PCB	Sensor Remote Expansion Device PCB only
200111	SD1-2ADI-PENC	Sensor Remote Expansion Device in a Standard Sealed Outdoor SPG Plastic Enclosure
200112	SD1-2ADI-TENC	Sensor Remote Expansion Device in an SPG Plastic Temperature Enclosure